

NVRTool Configuration Instruction

Chapter 1: NVR5.0 Settings

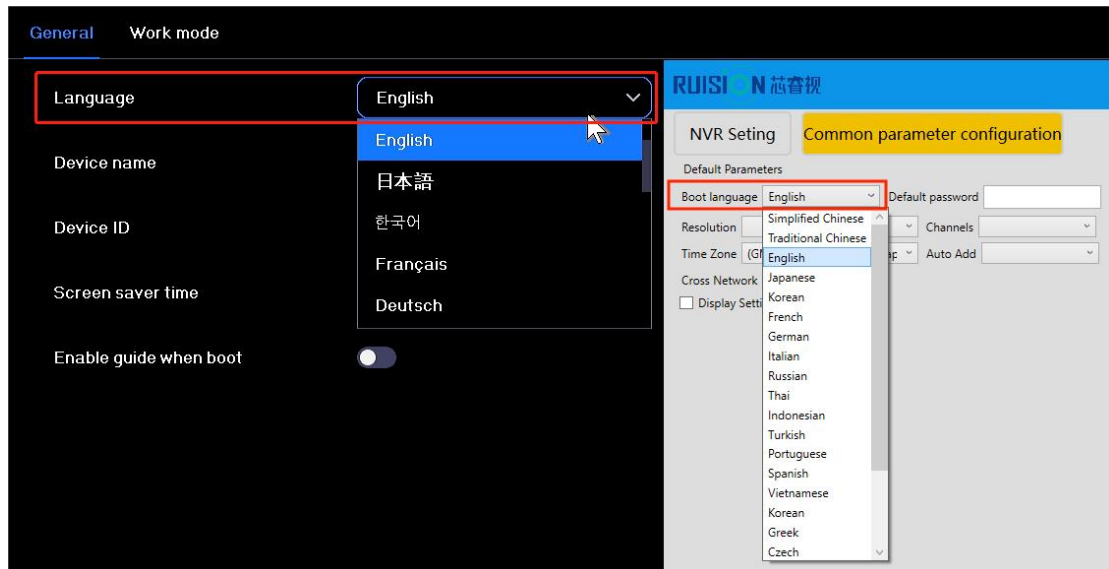
- 1、Account: admin; **Password: NVR password**; IP segment setting: Make NVR and computer in same network segment, NVR only will display all the device under same segment.
- 2、Update: After clicking, the selected configuration item will be updated.
- 3、Update and Restart: After clicking, the selected configuration items will be updated and **the factory settings will be restored**.
- 4、Menu Photo: support resolution: 248*60(png)
- 5、Boot Screen: resolution: 1920*1080(jpg), suggested image size within 128KB
- 6、Window Photo: resolution: 704*576(jpg), suggested image size within 64KB

The screenshot displays the NVR5.0 configuration interface. At the top, there is a navigation bar with icons for Live, Playback, Intelligent, Camera, and Settings. Below this, the 'NVR 5.0' logo is visible, along with a 'Menu logo' label. The main area shows a 'Camera' section with a 'Realtime' dropdown menu. Below the camera section, there is a 'Common parameter configuration' section with fields for 'user' (admin), 'password', and 'Setting IP segment' (192.168.6.1). A table lists connected devices with columns for IP, Type version, name, MAC, and DID. At the bottom, there are fields for 'Menu logo', 'Boot Screen Logo', 'Window Logo', and 'Configuration File', each with a 'select' button. To the right of these fields are two buttons: 'Update' and 'Update and Restart'.

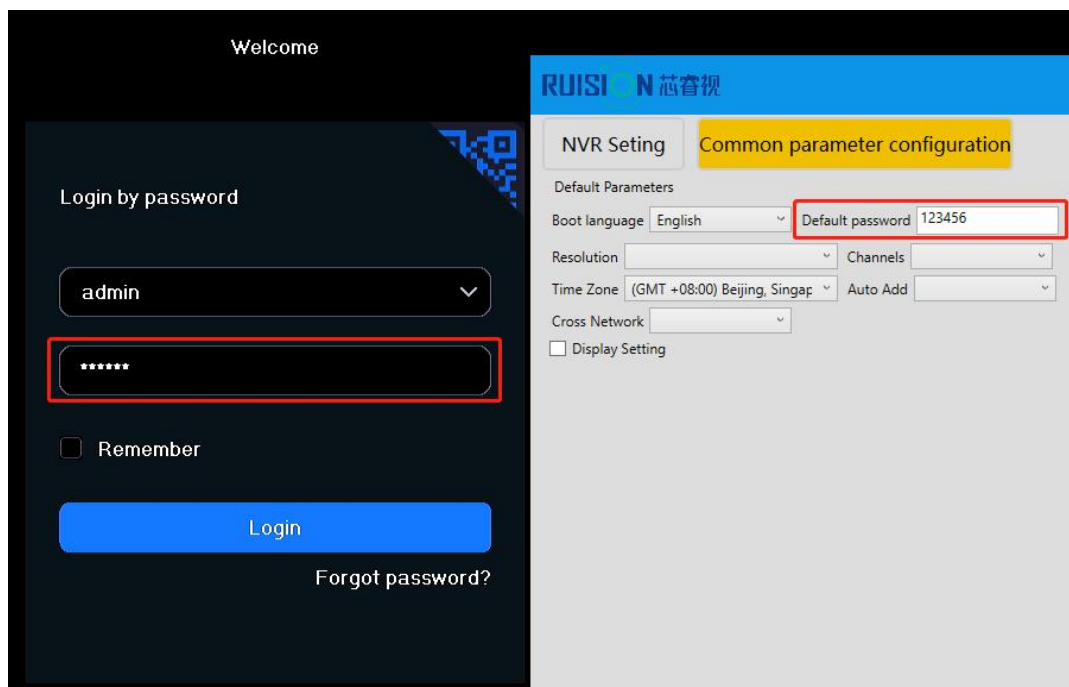
	IP	Type version	name	MAC	DID
<input checked="" type="checkbox"/>	192.168.6.2	N316B-11NEA-AI-Z02	NVR	5A:5A:00:68:F1:F9	IOTDDD-273510-
<input checked="" type="checkbox"/>	192.168.6.3	H4-50POM-S/W/BT	IPC	5A:5A:00:88:EE:53	IOTFAA-601938-
<input checked="" type="checkbox"/>	192.168.6.7	HI-IP5H	IPC	5A:5A:00:86:DD:4A	IOTEAA-225545-

Chapter 2: General Parameter Configuration

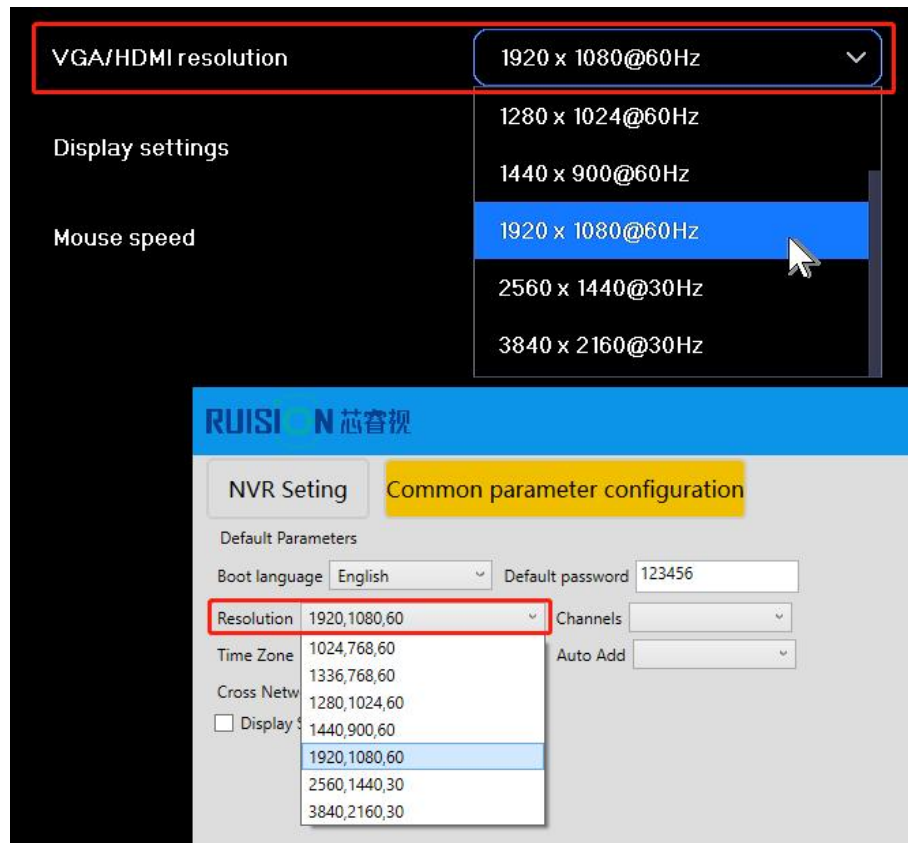
1、Menu Language: Custom default language。After setting, NVR menu language will not change after restore factory settings



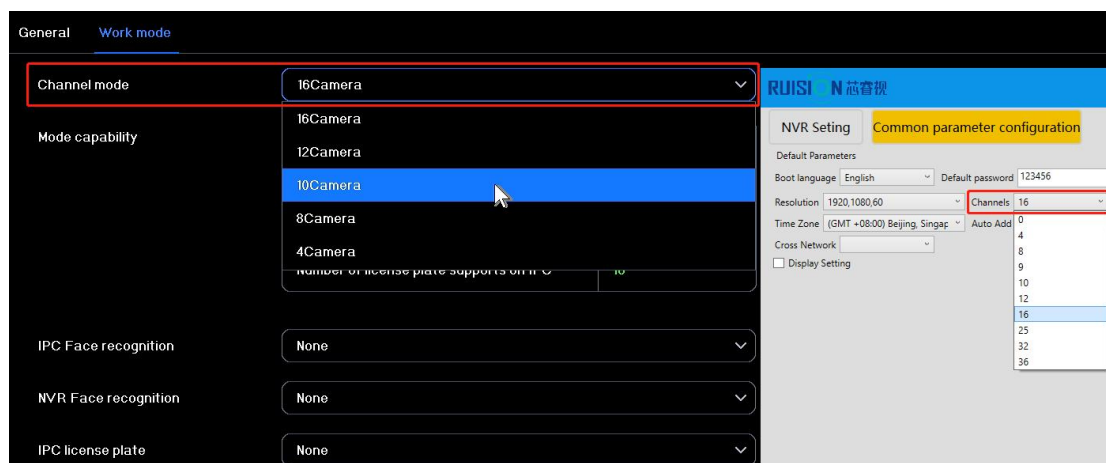
2、Default Password: custom default password, password is empty if not filled in 。
(Suggested to close mandatory password function if custom password, because when mandatory password function opened, user has to set password before login, factory customized password can not be used for login)



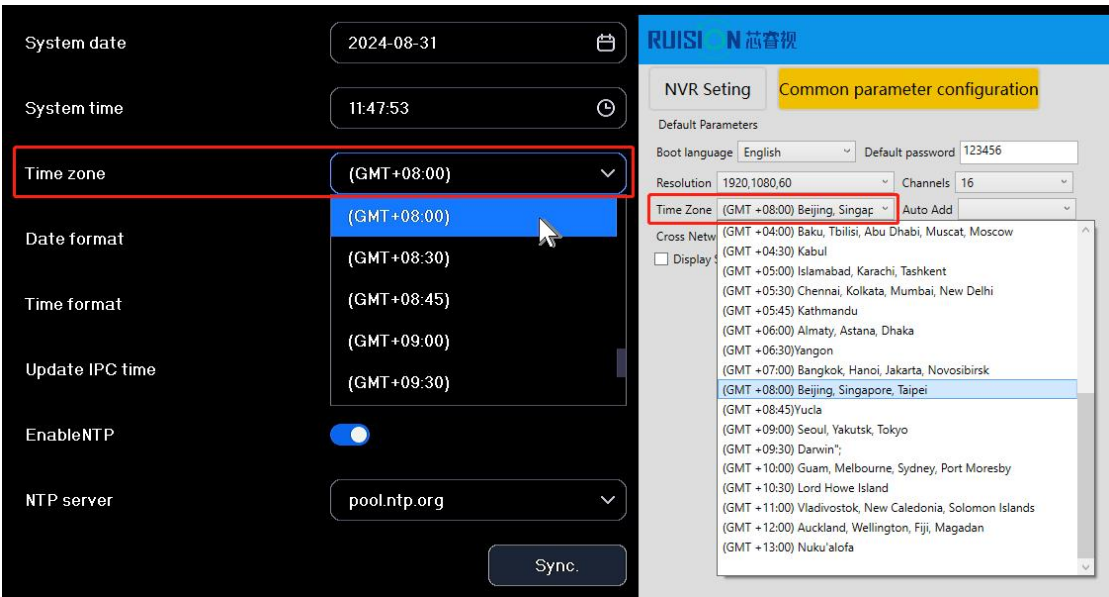
3、Resolution: custom default resolution (If the customized resolution exceeds the resolution of the monitor, it will cause a black screen that cannot be displayed. You need to long press the right mouse button for about 20 seconds to change the resolution to 1024 * 768)



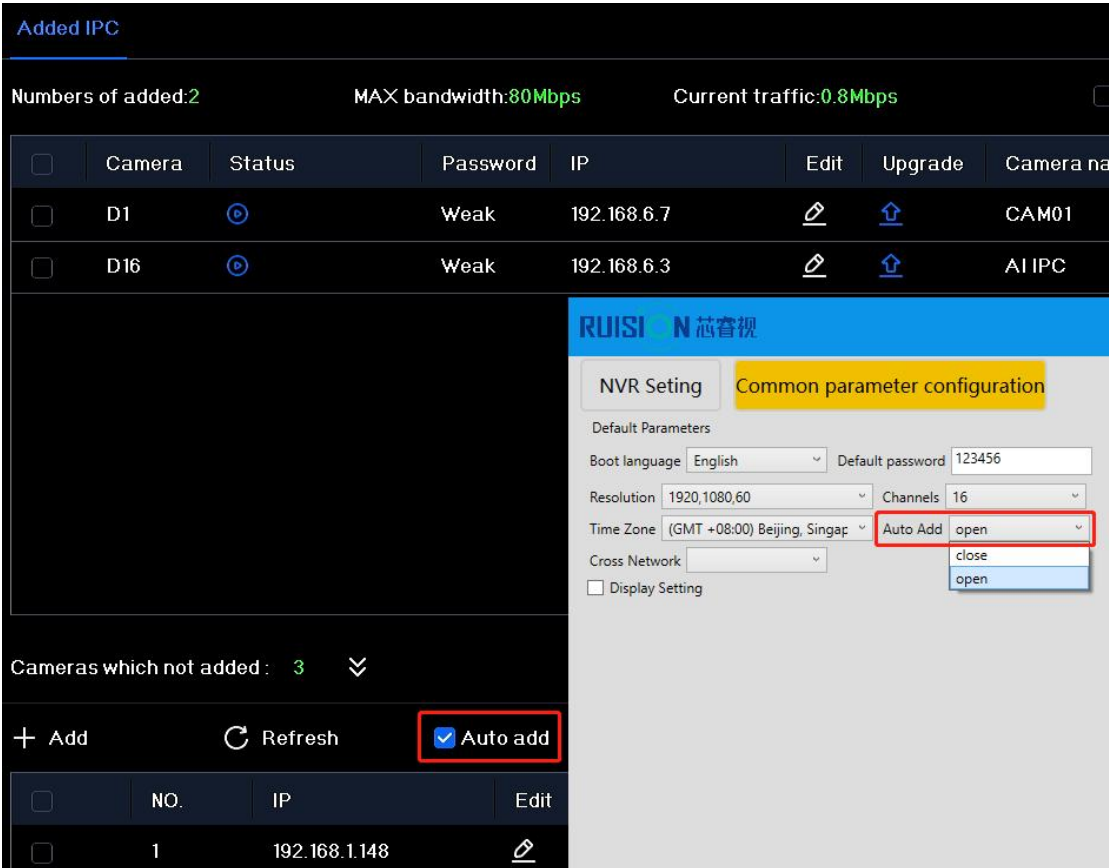
4、Channels: custom default channels. (If the maximum number of channels for the device is 36. When the number of channels is customized to 16, only 16 cameras can be connected, but the number of channels can be manually changed to 36 in the NVR. When customized to 0, the number of channels will be the same as the maximum number of channels)



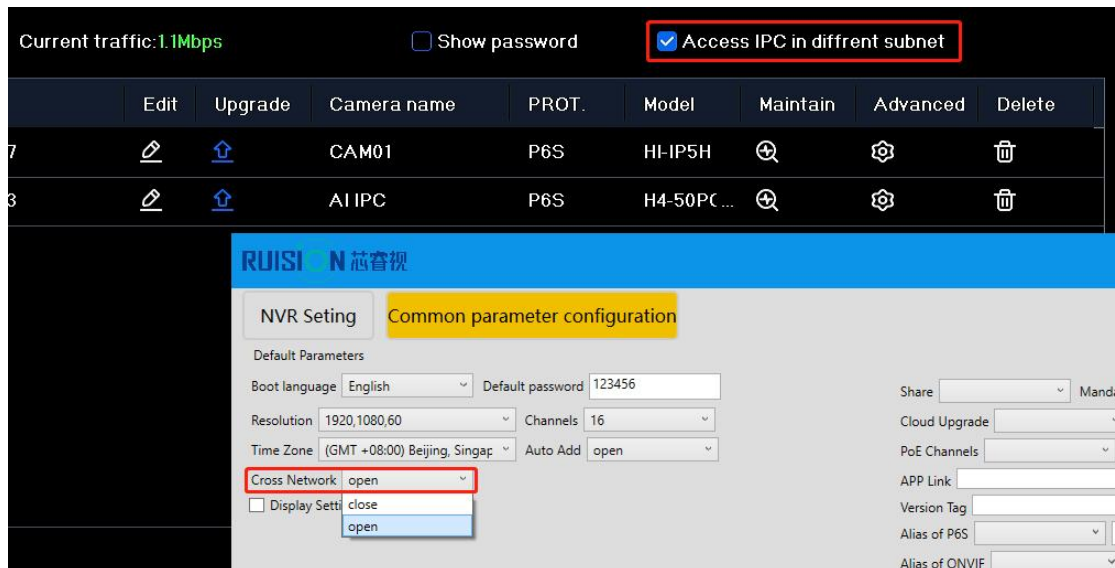
5、Time Zone: custom time zone



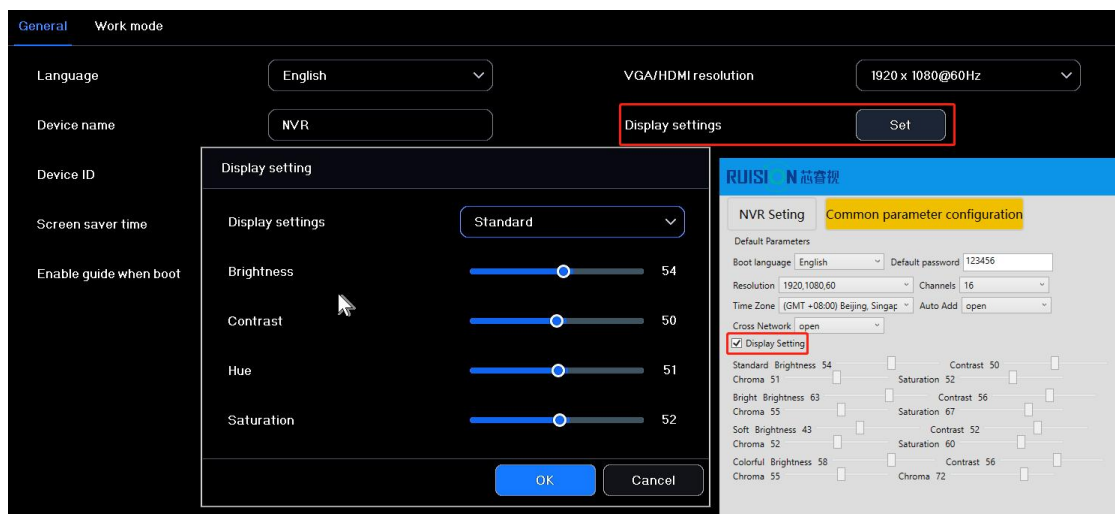
6、Auto Add: Open or Close



7、Access IPC in different subnet: Open or Close



8、Display Setting: custom default display output parameter. If customization is required, it is recommended to confirm the actual display effect of the parameter before proceeding with the customization



9、Share: support or unsupported.

Cloud services GB28181

Enable ☒

DID IOTDDD-2

Status Internet ready, support alarm notifications

No Binding

RUIJIE 锐捷视

NVR Setting Common parameter configuration

Default Parameters

Boot language Default password

Resolution Channels

Time Zone (GMT +08:00) Beijing, Singap Auto Add

Share support Mandatory Password

Cloud unsupported

PoE Channels

10、Mandatory Password: Open or Close. After open the mandatory password function, users must set a password before logging in. If there is a need to customize a default password, it is recommended to close the mandatory password function.

Weak password or default password used now, please change password for security.

Share support Mandatory Password open

Cloud Upgrade Max Channel close

PoE Channels

APP Link

Version Tag

Alias of P6S

Alias of ONVIF

Username admin

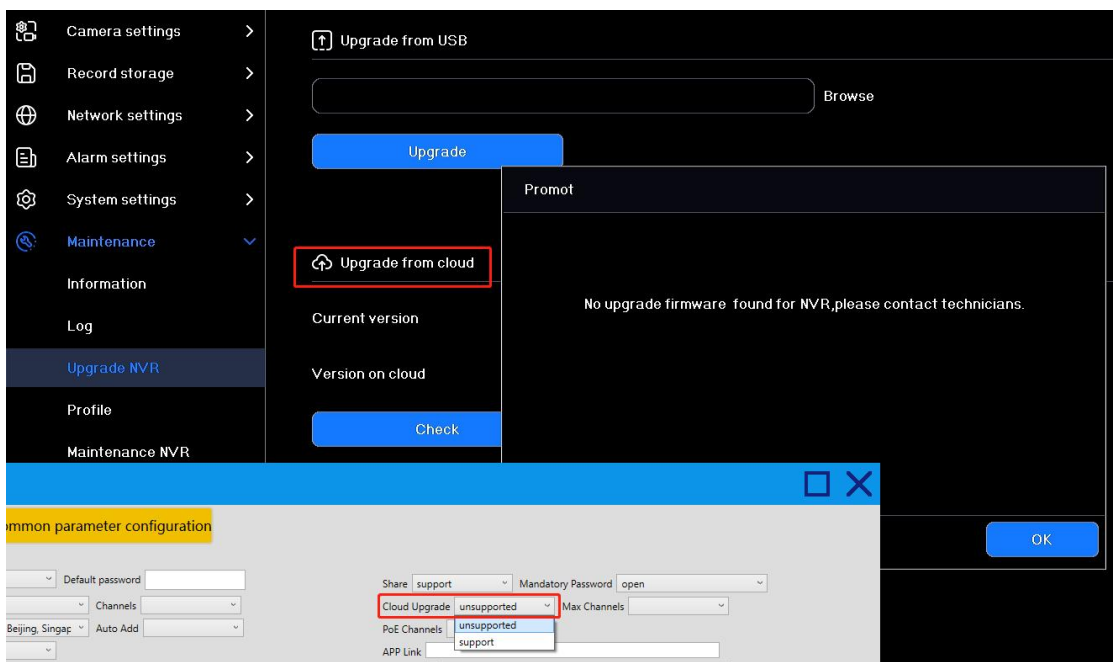
New password

Confirm password

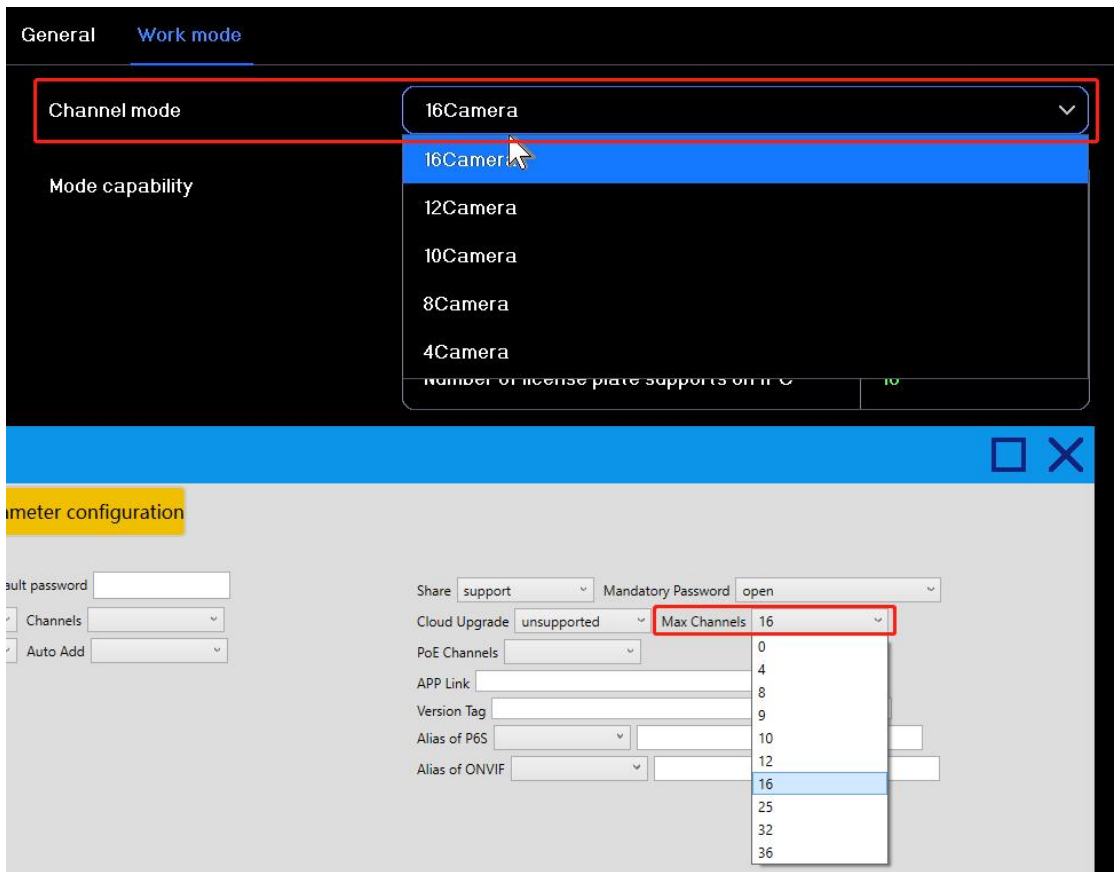
Promot: The password must be 8-16 characters long, Passwords only support numeric and alphabetic characters, contain at least 1 number and 1 uppercase letter.

OK

11、 Cloud Upgrade: support or unsupported. When customized as unsupported, clicking on cloud upgrade detection will prompt "No upgrade software found for NVR, please contact technicians"



12、 Max Channels: custom NVR max channel. When customized to 0, it will revert back to the initial maximum number of channels



13、POE Channels: enable plug and play function by choose POE channel number.
If set to 0, Plug and Play function close.

Device info.	Online users	Installation info.
Device name	NVR	
DID	IOTDDD-	N
Device model	N316B-11NEA-AI-Z02 P16	
Serial number	N1958178AE16E:	

□ ×

Share

Mandatory Password

Cloud Upgrade

Max Channels

PoE Channels

APP Link

Version Tag

Alias of P6S

Alias of ONVIF

14、APP Link: Customized APP link URL.

Share

Mandatory Password

Cloud Upgrade

Max Channels

PoE Channels

APP Link

Version Tag

Alias of P6S

Alias of ONVIF

15、Version Tagging: after customization, It will be displayed at the end of the main software version. **Once customized, it cannot be cleared and can only be modified.**

Information

Log

Upgrade NVR

Profile

Maintenance NVR

Numbers of alarm input

0

Numbers of alarm output

0

Number of audio output channels

1

System mode

16Preview + 1Playback

Maximum resolution of Main stream

4K(3840*2160)

Maximum resolution of Sub stream

D1(704*576)

Software version

6.0.4-20240813-DZ

Common parameter configuration

Default password

Share

Mandatory Password

Channels

Cloud Upgrade

Max Channels

MT +08:00 Beijing, Singap

PoE Channels

APP Link

Version Tag

-DZ

Alias of P6S

16、P6S Protocol alias: support or unsupported.

Added IPC

Numbers of added:0

MAX bandwidth:80Mbps

Current traffic:0.0Mbps

Show password

	Camera	Status	Password	IP	Edit	Upgrade	Camera name	PROT.

Share

Mandatory Password

Cloud Upgrade

Max Channels

PoE Channels

16

APP Link

Version Tag

Alias of P6S

unsupported

Alias of ONV

unsupported

support

PROT.	Firmware version
P6S	1.1.0-SG-BS
P6S	1.2.0-20240822WB
P6S	2.3.0-20240618

17、ONVIF alias: support or unsupported.

18、Save: a XXX.ini file will be generated once click save menu

Software Version:1.0.0.7

Chapter 3: Update NVR Parameter

1、Check the box of NVR device→Choose configuration file→click update and restart→update process finished

Software Version:1.0.0.7